

What is the Braintree District LSP?

The Braintree District Local Strategic Partnership (LSP) is a non-statutory body that brings together the public, private, voluntary and community sectors, working at a local level.

The LSP's aim is to improve the social, economic and environmental well-being of the people and communities of the Braintree District, now and for generations to come.

It achieves this by:

- Producing and delivering a Sustainable Community Strategy which sets out the priorities, objectives and performance indicators for improving the well-being of the Braintree District.
- Driving the development and delivery of the Braintree District Local Area Agreement.
- Working in a co-ordinated, strategic way to meet the priorities and needs of District.

The LSP's vision is:

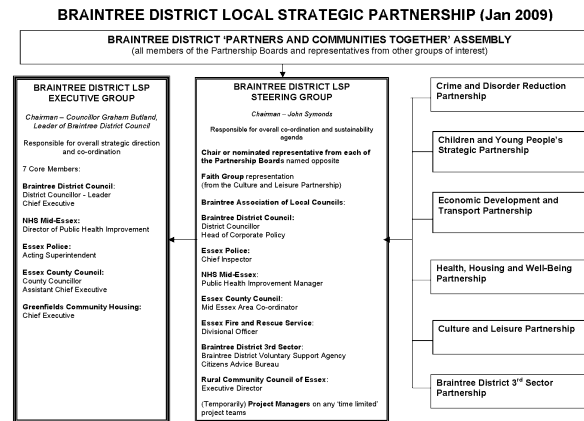
'One District – One Vision'

To improve the well-being of people and communities in the Braintree District now and for future generations – ensuring that local needs are met, that development is sustainable and accessible and that our historic towns, villages and attractive countryside are maintained, improved and protected.

The aims of the vision are

- to create a clean and green environment
- to achieve a prosperous local economy
- to enable everyone to enjoy a safe and healthy lifestyle

LSP Structure Chart



The Sustainable Community Strategy (draft)

The Strategy has been prepared jointly by the LSP and Braintree District Council and sets out the things which are most important to people in the District and which need to be addressed in the coming years. They fall under the following themes:

- Promoting accessibility to all
- Creating a clean and green environment
- Achieving a prosperous local economy
- Enabling everyone in the District to enjoy a safe and healthy lifestyle. This theme includes:
 - ❖ Access to housing
 - ❖ Health and well-being
 - ❖ Children and young people – their well-being and education

- ❖ Leisure, sport, recreation and the arts
- ❖ Community safety

(The Strategy has been consulted upon and is due for approval in the Summer)

The Local Area Agreement (Essex and District)

The Essex Local Area Agreement (LAA) is a joint project between the county's 13 Local Strategic Partnerships. It represents a real agreement between partners and is designed to bring a step-change in the collective effectiveness of the whole public sector in Essex.

The Essex LAA focuses the activities of the local public sector and the community and voluntary sector on the needs of identified groups of service users and residents. It brings better value for money by channelling funds from different public organisations towards shared priorities and targets.

The current Essex LAA runs for 3 years from 2008 - 2011.

The Braintree District Local Area Agreement is being produced that will focus on the delivery of the Sustainable Community Strategy priorities and the Essex LAA.

For more information on the LSP, please contact Jo Petchey (Partnerships & Performance Manager) on 01376 551414 ext 2366, email jo.petchey@braintree.gov.uk

LSP Key Projects

To help deliver the priorities of the Sustainable Community Strategy and the Local Area Agreements, the LSP has funded key projects starting April 2009.

Creative Communities

- The project uses arts and cultural activities to develop community cohesion in areas where there is growing tension between residents. The aim is to create more integrated communities and to reduce perceived anti-social behaviour.

Partnership responsible - Braintree District Crime and Disorder Reduction Partnership

Funded Business Advice and Mentoring

- The project works with stakeholders and funding agencies to identify opportunities to support new, emerging, existing and vulnerable businesses. One-to-one business advice and mentoring is provided to young and small existing businesses.

Partnership responsible - Economic Development and Transport Partnership

Learning and Skills Council Project

- The project creates a process for the investment of resources into addressing the comparatively low levels of community and workplace qualifications and vocational skills. The project also supports the Learning and Skills Council's apprenticeships project.

Partnership responsible - Economic Development and Transport Partnership

Village Agents (final name to be decided)

- The project is being piloted in the rural areas of the District to ensure that support and

information is provided to older and vulnerable people in the more isolated rural areas. Village Agents living in the community are recruited and trained to provide information and promote access to a wide range of local services (such as health, social care, personal safety, fuel poverty, benefits and pensions etc).

- The funding resources an additional Braintree Community Transport driver for the fully accessible minibus, which can be used in areas highlighted by the Village Agents.

Partnership responsible - Health, Housing and Well-Being Partnership

Preventing Homelessness in the District

- The project establishes a Braintree District Homelessness Strategy Steering Group to implement the Strategy and actions over the next 5 years. A Housing Advisory Officer (Partner Agency Co-ordinator) is appointed to work with vulnerable people and families to prevent homelessness.

Partnership responsible - Health, Housing and Well-Being Partnership

Teenage Pregnancy – under 18 conception rate

- The project aims to improve the outcomes for teenage parents and their children, through a local service mapping exercise and developing services and activities that are dedicated to young people and raising awareness of teenage parents and conception.

Partnership responsible - Braintree District Children and Young People's Strategic Partnership.



Braintree District Local Strategic Partnership

a quick guide